

Are you sourcing responsibly?

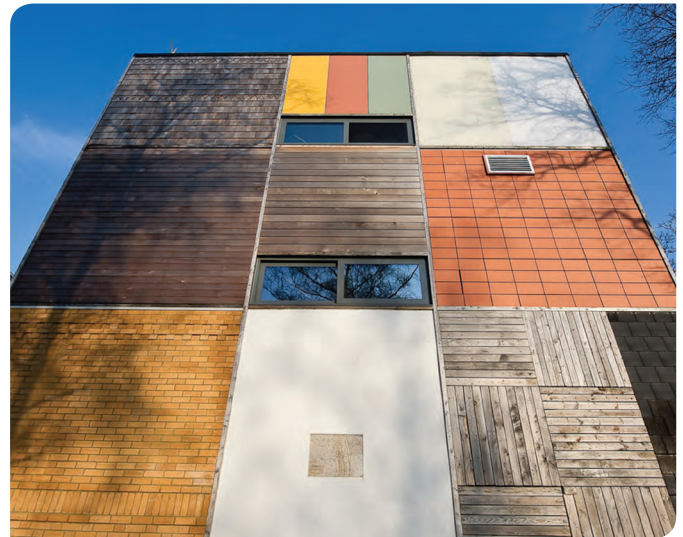
Consumers are increasingly concerned about where the products they are buying come from.

Key areas of concern range across ethical, environmental and societal issues including:

- Where do the materials come from?
- Have they been extracted and processed in an environmentally sensitive manner?
- Have the highest levels of ethics been demonstrated within the supply chain?
- Has the workforce involved in their extraction and production been treated fairly?
- Have all stakeholders in the supply chain been effectively consulted?
- Are communities local to the extraction and manufacture adequately considered?

Highly visible responsible sourcing schemes are now recognised across society – Fairtrade, Rainforest Alliance, Marine Stewardship Council, FSC, PEFC etc.

The construction industry is a major consumer of natural resources, user of manpower and has a large impact on the sustainability of the UK and the wider world. Recognising the importance of this issue BRE Global has developed BES 6001 Framework Standard for the Responsible Sourcing of Construction Products and an associated independent third-party certification scheme providing an effective means by which the responsible sourcing characteristics of all construction products and materials can be objectively assessed and compared.



The BES 6001 Standard

The BES 6001 Standard assesses an organisation's performance in three areas:

- Organisational Management
- Supply chain Management
- Environmental and social issues

Fundamental issues within these areas require a basic, 'Compulsory' level of performance which must be passed in order to secure the basic 'Pass' level of certification. Additional points can be scored in most areas of the standard demonstrating a performance above the basic and these can help deliver to the organisation one of the three higher levels of certification – 'Good', 'Very Good' and 'Excellent'.

Once certified all materials are listed in the BRE Global on-line service Green Book Live enabling specifiers to compare and select those products and materials with the best responsible sourcing performance.

BREEAM recognises the increasing importance of the issue of responsible sourcing. A section on responsible sourcing of materials is an integral part of the materials element of the methodology and points secured from BES 6001 secure additional credits in BREEAM.



Benefits of Certification

Securing certification to BES 6001 will benefit all organisations within the supply chain.

Manufacturers benefit through:

- Differentiation of their products against competitors
- Securing increased competitiveness and market share
- Demonstrating corporate reputation and leadership
- Benchmarking their manufacturing performance and facilitating continuous improvement through certification

Specifiers and purchasers benefit through

- Securing additional BREEAM credits for their buildings
- Reducing risk down the supply chain
- Demonstrating corporate reputation and leadership

Further information on BES 6001, including an application form, Fee Sheet and a downloadable copy of the full Standard text can be found at www.greenbooklive.com/responsiblesourcing

Greenbooklive.com

This is the unique reference source for environmental products and services. Greenbooklive is a free online database designed to help specifiers and end users identify products and services that can help to reduce their impact on the environment.

Greenbooklive brings together listings from a number of organisations and delivers comprehensive information on 'green' products and services, some approved to stringent environmental requirements and others based on information provided by manufacturers and trade bodies.

Greenbooklive provides specifiers and end users with an opportunity to select products and services which demonstrate their commitment to environmental best practice.

Certified Environmental Profiles and Responsibly Sourced Construction Products are listed within this site.

For more information please go to www.greenbooklive.com

For further information, contact the BRE Centre for Sustainable Products helpdesk on 01923 664462 or email responsiblesourcing@bre.co.uk