



Statement of Verification

BREG EN EPD No: 000767

Issue: 01

This is to verify that the Environmental Product Declaration provided by:

Altro Limited

are in accordance with the requirements of:

EN 15804:2012+A2:2019

and

BRE Global Scheme Document SD207

This declaration is for: 1 m² of Altro Walls (average weight of 3.60 kg/m²) with a thickness of 2.5mm.

Company Address

Altro Ltd,
Works Road,
Letchworth Garden City,
Hertfordshire,
SG6 1NW
United Kingdom



altro

Hayley Thomson
Signed for BRE Global Limited

Hayley Thomson
Operator

27 March 2026
Date of this Issue

27 March 2026
Date of First Issue

26 March 2031
Expiry Date



This Statement of Verification is issued subject to terms and conditions (for details visit www.greenbooklive.com/terms).

To check the validity of this statement of verification please, visit www.greenbooklive.com/check or contact us.

BRE Global Ltd., Garston, Watford WD25 9XX
T: +44 (0)333 321 8811 F: +44 (0)1923 664603 E: Enquiries@breglobal.com





Environmental Product Declaration

EPD Number: 000767

General Information

EPD Programme Operator	Applicable Product Category Rules
BRE Global Watford, Herts WD25 9XX United Kingdom	BRE 2025 Product Category Rules (PN 514 Rev 3.2) for Type III environmental product declaration of construction products to EN 15804:2012+A2:2019.
Commissioner of LCA study	LCA consultant/Tool
Altro Ltd Works Road Letchworth Garden City Hertfordshire SG6 1NW United Kingdom	Mustafa Ali/BRE LINA A2.
Declared/Functional Unit	Applicability/Coverage
1 m ² of Altro Walls (average weight of 3.60 kg/m ²) with a thickness of 2.5mm.	Product Specific.
EPD Type	Background database
Cradle to Gate with options.	Ecoinvent 3.8

Demonstration of Verification

CEN standard EN 15804 serves as the core PCR ^a

Independent verification of the declaration and data according to EN ISO 14025:2010

Internal

External

(Where appropriate ^b) Third party verifier:
Kim Allbury

a: Product category rules

b: Optional for business-to-business communication; mandatory for business-to-consumer communication (see EN ISO 14025:2010, 9.4)

Comparability

Environmental product declarations from different programmes may not be comparable if not compliant with EN 15804:2012+A2:2019. Comparability is further dependent on the specific product category rules, system boundaries and allocations, and background data sources. See Clause 5.3 of EN 15804:2012+A2:2019 for further guidance



Information modules covered

Product			Construction		Use stage							End-of-life				Benefits and loads beyond the system boundary
A1	A2	A3	A4	A5	Related to the building fabric					Related to the building						D
					B1	B2	B3	B4	B5	B6	B7	C1	C2	C3	C4	
Raw materials supply	Transport	Manufacturing	Transport to site	Construction – Installation	Use	Maintenance	Repair	Replacement	Refurbishment	Operational energy use	Operational water use	Deconstruction demolition	Transport	Waste processing	Disposal	Reuse, Recovery and/or Recycling potential
<input checked="" type="checkbox"/>	<input checked="" type="checkbox"/>	<input checked="" type="checkbox"/>	<input checked="" type="checkbox"/>	<input checked="" type="checkbox"/>	<input type="checkbox"/>	<input type="checkbox"/>	<input type="checkbox"/>	<input type="checkbox"/>	<input type="checkbox"/>	<input type="checkbox"/>	<input type="checkbox"/>	<input checked="" type="checkbox"/>	<input checked="" type="checkbox"/>	<input checked="" type="checkbox"/>	<input checked="" type="checkbox"/>	<input checked="" type="checkbox"/>

Note: Ticks indicate the Information Modules declared.

Manufacturing site(s)

1 manufacturing site in Germany

Construction Product:

Product Description

Altro Walls is a range of u-PVC wall cladding and wall protection solutions. They are Hazard Analysis and Critical Control Points (HACCP) approved and made from a high-quality, food-safe PVCu polymer that can handle temperatures up to 60°C. They meet all current European Union (EU) Directives on health and hygiene. This makes it particularly these products suitable for use in commercial kitchens. Typical applications

- Accident and emergency, critical care
- Commercial, social, student kitchens
- Laboratories, test areas
- Laundries, mortuaries
- Bathrooms

This EPD applies to Altro Whiterock White™, Altro Whiterock Satins™, Altro Whiterock, Chameleon™, Altro Whiterock™ wall designs, Altro Fortis Titanium™, Altro Puraguard, Altro Whiterock Matte and Altro Splashbacks as they share the same composition and production process.

Technical Information

A link to the technical properties can be found here: [Altro Whiterock White™ | Hygienic Kitchen Wall Cladding | Altro UK](#)

Property	Value, Unit
Thickness (EN ISO 24346)	2.5 mm
Density (ISO 1183)	1.43-1.46 kg/m ³
Tensile E-modulus (ISO 527 50mm/min)	2950 Mpa



Property	Value, Unit
Impact resistance (Charpy) (ISO 179/1eU)	No breakage
Notched Impact Resistance (Charpy) (ISO 179/1eA)	9.5kJ/m ²
Tensile Strength (ISO 527 – 50mm/min)	53 Mpa
Flexural Strength (ISO 178 2mm/min)	78 Mpa
Flexural E-Modulus (ISO 178 2mm/min)	2980 Mpa
Shore Hardness (ISO 868)	75 D
Coefficient of Expansion (DIN 53 752)	0.07 mm/mK
Compressive Strength (DIN 53 421)	68 N/mm ²
Vicat-Softening Point (ISO 306-B50)	72-74 degC
Heat Distortion Temperature (ISO 75-2 (1.8Mpa))	60 degC
Water Absorption (ISO62-after 216h)	0.1%
Thermal Conductivity (DIN 52 612)	0.17 W/mK



Main Product Contents

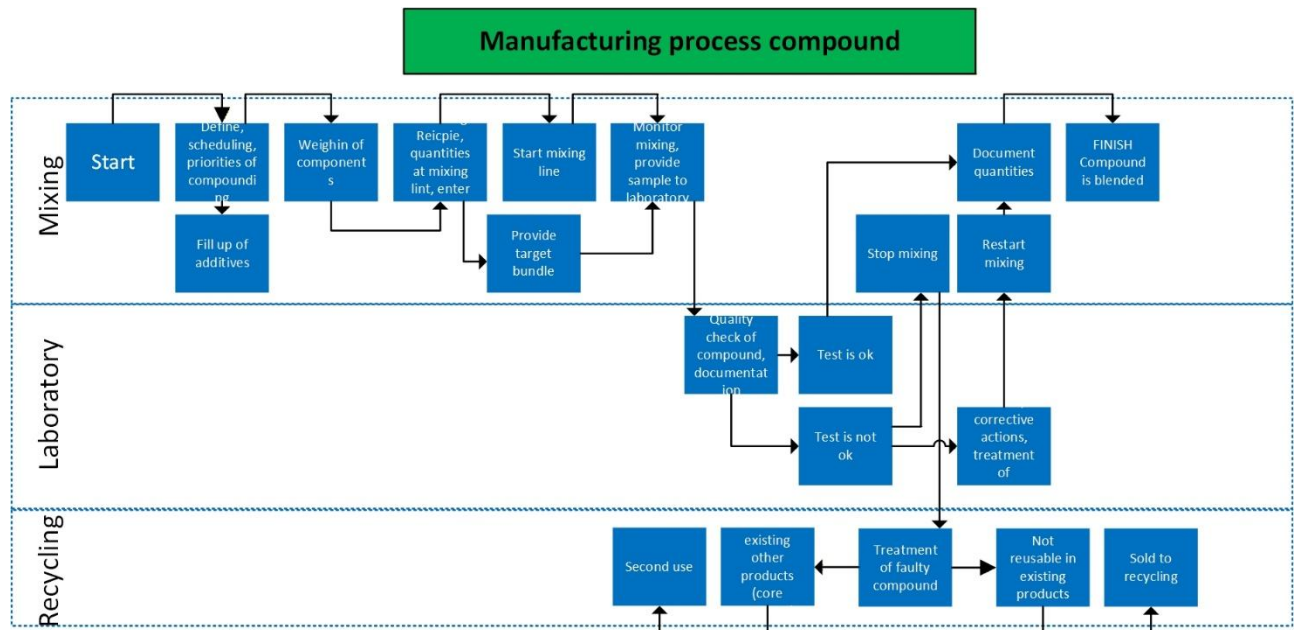
Material/Chemical Input	%
PVC	76.24
Chalk	7.93
Modifier/Processing aid/lubricant	5.97
Stabiliser	3.97
Titanium dioxide	2.93
Flame retardant	2.13
Decorative foil	0.83

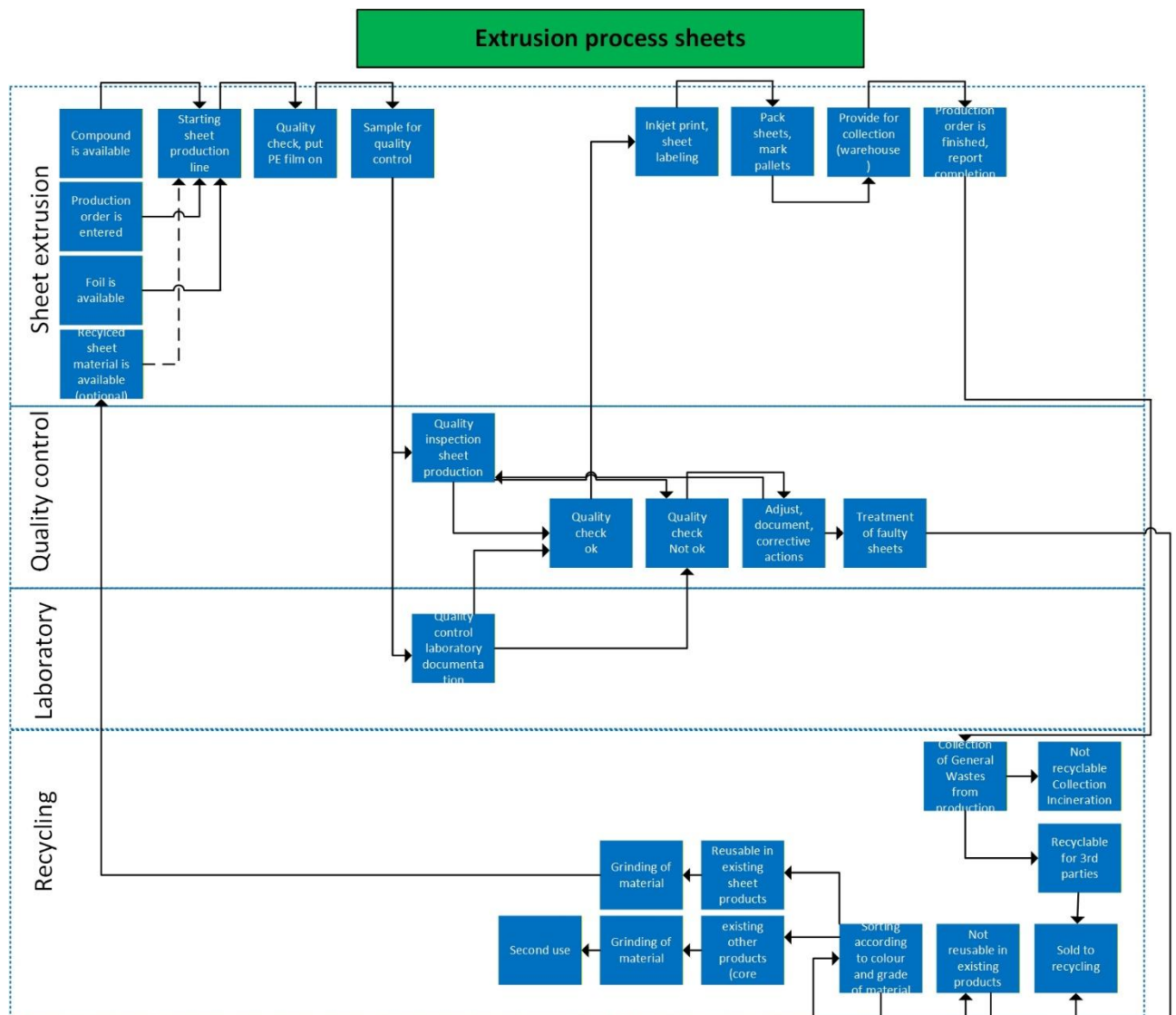
The composition is same for all the products that the EPD covers.

Manufacturing Process

Altro sheets are produced with u-PVC extrusion line with calender rolls and cooled down by ambient air on roller table. Raw materials are mixed on site. **Note:** For manufacturing, the Germany national grid electricity and the EU natural gas has been used, and any processing waste generated during production will be sent for recycling.

Process flow diagram





Construction Installation

Altro Walls sheets are installed using appropriate adhesives and associated accessory products.

Use Information

Maintenance of the product, is simple visual checks for signs of damage and wear. No specialised care is needed beyond the occasional use of a cleaning solution.

End of Life

Altro Walls cannot be recovered at the end of life as it is bonded to the wall with an adhesive. Therefore, according to BRE PCR 3.2, 100% of Altro Walls will end up in landfill.



Life Cycle Assessment Calculation Rules

Declared / Functional unit description

The declared unit is 1 m² of Altro Walls (average weight of 3.60 kg/m²) with a thickness of 2.5mm.

System boundary

In accordance with the modular approach as defined in EN15804:2012+A2:2019 and the BRE 2025 Product Category Rules (PN 514 Rev 3.2), this cradle-to-gate LCA with options & modules C and D EPD includes the processes covered during the raw material extraction and manufacturing phase in modules A1 to A3. It also includes transport of the finished product to site in module A4, and waste management from installation in A5, and the end-of-life scenario in modules C1, C2, C3, C4 and module D.

Data sources, quality and allocation

The supporting LCA study was carried out using BRE LINA A2 software using manufacturer-specific data provided by Altro for the production period between January 2024 and December 2025 at the German site. The German site produces other PVC products in addition to the Altro Walls products, Allocation based on m² is not possible due to the wide range of sheet thicknesses which makes m²-based comparisons inappropriate. Therefore, allocation is carried out based on the proportion of Altro products relative to the total site production (sheets + profiles) in kg. There are two manufacturing processes carried out (a) PVC manufacturing (mixing) and (b) Sheet extrusion. These processes are carried out in different units. Raw materials, ancillary materials, and packaging quantities are taken from 2024 production data and purchase information. Electricity quantities are allocated based on the proportion of Altro product extruded relative to other products, which is 23.55% whereas for mixing its 2.06%. Similarly, gas and LPG allocated based on the percentage of Altro material mixed compared to other products, at 23.55%. No water is used for the profile section. Water is only used in the mixing plant and is allocated at 2.42%. All process and non-process wastes are allocated at 2.42%. Wastewater is allocated at 2.54%. Secondary data has been drawn from Ecoinvent v3.8. All ecoinvent datasets are complete within the context used and conform to the system boundary and the criteria for the exclusion of inputs and outputs, according to the requirements specified in EN15804+A2:2019.

Table E.2 from EN 15804+A2, Annex E has been used to assess the data quality of relevant data. The quality level of geography, time and technological representativeness is Very Good as specific European datasets have been selected from the ecoinvent LCI, and the background LCI datasets are from ecoinvent v3.8 which was compiled in 2021. Therefore, the most appropriate LCA data have been used.

ISO14044 guidance. Quality Level	Geographical representativeness	Technical representativeness	Time representativeness
Very Good	Data from area under study.	Data from processes and products under study. Same state of technology applied as defined in goal and scope (i.e., identical technology).	There is approximately 3-4 years between the Ecoinvent LCI reference year, and the time period for which the LCA was undertaken

Location-based approach has been used for the electricity mix. Specific European datasets have been selected from the ecoinvent LCI for this LCA. Manufacturer uses the national grid electricity and natural gas for production, therefore the national grid electricity dataset "Electricity – Germany (kWh) Consumption Mix" has been used for the LCA modelling (Ecoinvent 3.8). The GWP carbon footprint for using 1 kWh of electricity, Germany kWh is 0.604 kgCO₂e/kWh and for the Natural gas, at industrial furnace (kWh, EU) carbon footprint for using 1 kWh is 0.256 kgCO₂eq. The quality level of time representativeness is also Very Good as the background LCI datasets are based on ecoinvent v3.8 which was compiled in 2021. Therefore, there is less than 5 years between the ecoinvent LCI reference year and the time period for which the LCA was undertaken.



Additionally, LCA-method Cut-off, EN 15804+A2 has been used in this LCA and the characterisation factors are based on Table C.1 of EN15804 Standard.

Cut-off criteria

The inventory process in this LCA includes all data related to raw materials, packaging material and consumable items. Process energy, water use and discharge, and waste are also included. No inputs or outputs have been excluded. All raw materials and packaging inputs, plus their transport, process and general energy and water use, production and non-production waste, have been included, except for direct emissions to air, water and soil, which are not measured.



LCA Results (1 m2 of Altro Walls (average weight of 3.60 kg/m2) with a thickness of 2.5mm)

(MND = module not declared; MNR = module not relevant; INA = indicator not assessed; AGG = aggregated)

Parameters describing environmental impacts			GWP-total	GWP-fossil	GWP-biogenic	GWP-luluc	ODP	AP	EP-freshwater
			kg CO ₂ eq	kg CO ₂ eq	kg CO ₂ eq	kg CO ₂ eq	kg CFC11 eq	mol H ⁺ eq	kg (PO ₄) ³⁻ eq
Product stage	Raw material supply	A1	7.11E+00	7.04E+00	7.02E-02	5.62E-03	3.53E-06	4.46E-02	2.40E-03
	Transport	A2	1.97E-01	1.96E-01	1.67E-04	7.71E-05	4.54E-08	7.97E-04	1.26E-05
	Manufacturing	A3	1.02E+00	1.40E+00	-3.85E-01	2.04E-03	2.21E-07	4.67E-03	1.33E-03
	Total (Consumption grid)	A1-3	8.33E+00	8.64E+00	-3.15E-01	7.74E-03	3.80E-06	5.01E-02	3.74E-03
Construction process stage	Transport	A4	3.00E-02	2.99E-02	2.55E-05	1.17E-05	6.92E-09	1.21E-04	1.93E-06
	Construction	A5	1.02E+00	4.59E-01	5.60E-01	2.72E-04	1.20E-07	1.81E-03	1.26E-04
100% - Landfill									
End of life	Deconstruction, demolition	C1	0.00E+00	0.00E+00	0.00E+00	0.00E+00	0.00E+00	0.00E+00	0.00E+00
	Transport	C2	3.00E-02	2.99E-02	2.55E-05	1.17E-05	6.92E-09	1.21E-04	1.93E-06
	Waste processing	C3	0.00E+00	0.00E+00	0.00E+00	0.00E+00	0.00E+00	0.00E+00	0.00E+00
	Disposal	C4	4.22E-01	4.22E-01	2.73E-04	4.32E-05	1.16E-08	3.46E-04	6.34E-06
Potential benefits and loads beyond the system boundaries	Reuse, recovery, recycling potential	D	0.00E+00	0.00E+00	0.00E+00	0.00E+00	0.00E+00	0.00E+00	0.00E+00

GWP-total = Global warming potential, total;
 GWP-fossil = Global warming potential, fossil;
 GWP-biogenic = Global warming potential, biogenic;
 GWP-luluc = Global warming potential, land use and land use change;

ODP = Depletion potential of the stratospheric ozone layer;
 AP = Acidification potential, accumulated exceedance; and
 EP-freshwater = Eutrophication potential, fraction of nutrients reaching freshwater end compartment



LCA Results (continued)

(MND = module not declared; MNR = module not relevant; INA = indicator not assessed; AGG = aggregated)

			EP-marine	EP-terrestrial	POCP	ADP-mineral & metal	ADP-fossil	WDP	PM
			kg N eq	mol N eq	kg NMVOC eq	kg Sb eq	MJ, net calorific value	m ³ world eq deprived	disease incidence
Product stage	Raw material supply	A1	5.96E-03	5.69E-02	2.52E-02	1.21E-04	1.77E+02	5.68E+00	2.86E-07
	Transport	A2	2.40E-04	2.62E-03	8.03E-04	6.82E-07	2.97E+00	1.34E-02	1.69E-08
	Manufacturing	A3	1.19E-03	1.03E-02	3.25E-03	8.34E-06	2.44E+01	6.87E-01	4.10E-08
	Total (Consumption grid)	A1-3	7.39E-03	6.98E-02	2.93E-02	1.30E-04	2.04E+02	6.38E+00	3.44E-07
Construction process stage	Transport	A4	3.66E-05	4.00E-04	1.22E-04	1.04E-07	4.52E-01	2.04E-03	2.58E-09
	Construction	A5	3.57E-04	3.25E-03	1.20E-03	4.19E-06	6.65E+00	4.40E-01	1.35E-08
100% - Landfill									
End of life	Deconstruction, demolition	C1	0.00E+00	0.00E+00	0.00E+00	0.00E+00	0.00E+00	0.00E+00	0.00E+00
	Transport	C2	3.66E-05	4.00E-04	1.22E-04	1.04E-07	4.52E-01	2.04E-03	2.58E-09
	Waste processing	C3	0.00E+00	0.00E+00	0.00E+00	0.00E+00	0.00E+00	0.00E+00	0.00E+00
	Disposal	C4	7.70E-03	1.25E-03	4.48E-04	1.34E-07	9.20E-01	4.07E-02	6.53E-09
Potential benefits and loads beyond the system boundaries	Reuse, recovery, recycling potential	D	0.00E+00	0.00E+00	0.00E+00	0.00E+00	0.00E+00	0.00E+00	0.00E+00

EP-marine = Eutrophication potential, fraction of nutrients reaching marine end compartment;
 EP-terrestrial = Eutrophication potential, accumulated exceedance;
 POCP = Formation potential of tropospheric ozone;
 ADP-mineral&metals = Abiotic depletion potential for non-fossil resources;

ADP-fossil = Depletion potential of the stratospheric ozone layer;
 WDP = Water (user) deprivation potential, deprivation-weighted water consumption; and
 PM = Particulate matter.



LCA Results (continued)

(MND = module not declared; MNR = module not relevant; INA = indicator not assessed; AGG = aggregated)

			Parameters describing environmental impacts				
			IRP	ETP-fw	HTP-c	HTP-nc	SQP
			kBq U ²³⁵ eq	CTUe	CTUh	CTUh	dimensionless
Product stage	Raw material supply	A1	1.04E+00	2.12E+02	6.90E-09	1.73E-07	2.17E+01
	Transport	A2	1.53E-02	2.32E+00	7.50E-11	2.43E-09	2.04E+00
	Manufacturing	A3	2.09E-01	1.75E+01	1.09E-09	1.53E-08	4.44E+01
	Total (Consumption grid)	A1-3	1.26E+00	2.32E+02	8.07E-09	1.91E-07	6.81E+01
Construction process stage	Transport	A4	2.33E-03	3.53E-01	1.14E-11	3.70E-10	3.11E-01
	Construction	A5	4.24E-02	1.43E+01	4.14E-10	8.33E-09	2.38E+00
100% - Landfill							
End of life	Deconstruction, demolition	C1	0.00E+00	0.00E+00	0.00E+00	0.00E+00	0.00E+00
	Transport	C2	2.33E-03	3.53E-01	1.14E-11	3.70E-10	3.11E-01
	Waste processing	C3	0.00E+00	0.00E+00	0.00E+00	0.00E+00	0.00E+00
	Disposal	C4	4.49E-03	1.92E+00	3.08E-11	8.16E-10	2.14E+00
Potential benefits and loads beyond the system boundaries	Reuse, recovery, recycling potential	D	0.00E+00	0.00E+00	0.00E+00	0.00E+00	0.00E+00

IRP = Potential human exposure efficiency relative to U235;
 ETP-fw = Potential comparative toxic unit for ecosystems;
 HTP-c = Potential comparative toxic unit for humans;

HTP-nc = Potential comparative toxic unit for humans; and
 SQP = Potential soil quality index.



LCA Results (continued)

(MND = module not declared; MNR = module not relevant; INA = indicator not assessed; AGG = aggregated)

			Parameters describing resource use, primary energy					
			PERE	PERM	PERT	PENRE	PENRM	PENRT
			MJ	MJ	MJ	MJ	MJ	MJ
Product stage	Raw material supply	A1	8.53E+00	0.00E+00	8.53E+00	1.01E+02	7.43E+01	1.75E+02
	Transport	A2	4.18E-02	0.00E+00	4.18E-02	2.91E+00	0.00E+00	2.91E+00
	Manufacturing	A3	5.22E+00	4.68E+00	9.90E+00	1.88E+01	2.81E+00	2.16E+01
	Total (Consumption grid)	A1-3	1.38E+01	4.68E+00	1.85E+01	1.23E+02	7.71E+01	2.00E+02
Construction process stage	Transport	A4	6.37E-03	0.00E+00	6.37E-03	4.44E-01	0.00E+00	4.44E-01
	Construction	A5	-4.54E+00	5.12E+00	5.77E-01	-1.73E+00	8.01E+00	6.28E+00
100% - Landfill								
End of life	Deconstruction, demolition	C1	0.00E+00	0.00E+00	0.00E+00	0.00E+00	0.00E+00	0.00E+00
	Transport	C2	6.37E-03	0.00E+00	6.37E-03	4.44E-01	0.00E+00	4.44E-01
	Waste processing	C3	0.00E+00	0.00E+00	0.00E+00	0.00E+00	0.00E+00	0.00E+00
	Disposal	C4	1.89E-02	0.00E+00	1.89E-02	-1.10E+02	1.11E+02	9.05E-01
Potential benefits and loads beyond the system boundaries	Reuse, recovery, recycling potential	D	0.00E+00	0.00E+00	0.00E+00	0.00E+00	0.00E+00	0.00E+00

PERE = Use of renewable primary energy excluding renewable primary energy used as raw materials;
 PERM = Use of renewable primary energy resources used as raw materials;
 PERT = Total use of renewable primary energy resources;

PENRE = Use of non-renewable primary energy excluding non-renewable primary energy resources used as raw materials;
 PENRM = Use of non-renewable primary energy resources used as raw materials;
 PENRT = Total use of non-renewable primary energy resource



LCA Results (continued)

(MND = module not declared; MNR = module not relevant; INA = indicator not assessed; AGG = aggregated)

			SM	RSF	NRSF	FW
			kg	MJ net calorific value	MJ net calorific value	m ³
Product stage	Raw material supply	A1	2.67E-02	0.00E+00	0.00E+00	1.35E-01
	Transport	A2	0.00E+00	0.00E+00	0.00E+00	3.31E-04
	Manufacturing	A3	1.83E-02	0.00E+00	0.00E+00	1.66E-02
	Total (Consumption grid)	A1-3	4.50E-02	0.00E+00	0.00E+00	1.52E-01
Construction process stage	Transport	A4	0.00E+00	0.00E+00	0.00E+00	5.04E-05
	Construction	A5	1.39E-03	0.00E+00	0.00E+00	1.04E-02
100% Scenario						
End of life	Deconstruction, demolition	C1	0.00E+00	0.00E+00	0.00E+00	0.00E+00
	Transport	C2	0.00E+00	0.00E+00	0.00E+00	5.04E-05
	Waste processing	C3	0.00E+00	0.00E+00	0.00E+00	0.00E+00
	Disposal	C4	3.18E-04	0.00E+00	0.00E+00	9.59E-04
Potential benefits and loads beyond the system boundaries	Reuse, recovery, recycling potential	D	0.00E+00	0.00E+00	0.00E+00	0.00E+00

SM = Use of secondary material;
RSF = Use of renewable secondary fuels;

NRSF = Use of non-renewable secondary fuels;
FW = Net use of fresh water



LCA Results (continued)

(MND = module not declared; MNR = module not relevant; INA = indicator not assessed; AGG = aggregated)

Other environmental information describing waste categories			HWD	NHWD	RWD
			kg	kg	kg
Product stage	Raw material supply	A1	7.14E-01	1.22E+01	4.06E-04
	Transport	A2	3.27E-03	5.81E-02	2.01E-05
	Manufacturing	A3	9.93E-02	6.50E+00	6.95E-05
	Total (Consumption grid)	A1-3	8.17E-01	1.88E+01	4.96E-04
Construction process stage	Transport	A4	4.99E-04	8.86E-03	3.06E-06
	Construction	A5	5.98E-02	1.07E+00	1.61E-05
100% Scenario					
End of life	Deconstruction, demolition	C1	0.00E+00	0.00E+00	0.00E+00
	Transport	C2	4.99E-04	8.86E-03	3.06E-06
	Waste processing	C3	0.00E+00	0.00E+00	0.00E+00
	Disposal	C4	1.94E-03	3.64E+00	5.40E-06
Potential benefits and loads beyond the system boundaries	Reuse, recovery, recycling potential	D	0.00E+00	0.00E+00	0.00E+00

HWD = Hazardous waste disposed;
 NHWD = Non-hazardous waste disposed;
 RWD = Radioactive waste disposed



LCA Results (continued)

(MND = module not declared; MNR = module not relevant; INA = indicator not assessed; AGG = aggregated)

Other environmental information describing output flows – at end of life								
			CRU	MFR	MER	EE	Biogenic carbon (product)	Biogenic carbon (packaging)
			kg	kg	kg	MJ per energy carrier	kg C	kg C
Product stage	Raw material supply	A1	0.00E+00	0.00E+00	0.00E+00	0.00E+00	0.00E+00	0.00E+00
	Transport	A2	0.00E+00	0.00E+00	0.00E+00	0.00E+00	0.00E+00	0.00E+00
	Manufacturing	A3	0.00E+00	3.03E-02	6.92E-10	0.00E+00	0.00E+00	1.36E-01
	Total (Consumption grid)	A1-3	0.00E+00	3.03E-02	6.92E-10	0.00E+00	0.00E+00	1.36E-01
Construction process stage	Transport	A4	0.00E+00	0.00E+00	0.00E+00	0.00E+00	0.00E+00	0.00E+00
	Construction	A5	0.00E+00	6.39E-02	5.85E-02	0.00E+00	0.00E+00	0.00E+00
100% - Landfill								
End of life	Deconstruction, demolition	C1	0.00E+00	0.00E+00	0.00E+00	0.00E+00	0.00E+00	0.00E+00
	Transport	C2	0.00E+00	0.00E+00	0.00E+00	0.00E+00	0.00E+00	0.00E+00
	Waste processing	C3	0.00E+00	0.00E+00	0.00E+00	0.00E+00	0.00E+00	0.00E+00
	Disposal	C4	0.00E+00	0.00E+00	0.00E+00	0.00E+00	0.00E+00	0.00E+00
Potential benefits and loads beyond the system boundaries	Reuse, recovery, recycling potential	D	0.00E+00	0.00E+00	0.00E+00	0.00E+00	0.00E+00	0.00E+00

CRU = Components for reuse;
MFR = Materials for recycling

MER = Materials for energy recovery;
EE = Exported Energy



Scenarios and additional technical information

Scenarios and additional technical information			
Scenario	Parameter	Units	Results
A4	A generic transport to site distance of 50 km has been selected as a reasonable average. End-users of the EPD can use this information to calculate a bespoke transport to site distance if required, i.e. divide the module A4 impacts by 50 and multiply them by a bespoke distance		
	Fuel type / Vehicle type	Litre of fuel type per distance or vehicle type	16-32 tonne lorry
	Distance:	km	50
	Capacity utilisation (incl. empty returns)	%	26
	Weight of the transported product	kg/m ³	3.60
A5	This scenario has been modelled to account for packaging waste. The wood and cardboard waste has been assumed to be 100% recycled. For plastics, according to Alliance for Sustainable Building Products (ASBP), 44% is sent for recycling; 42% for energy recovery and the remainder to landfill and these figures have been used for modelling A5.		
C1 - Deconstruction	When the product reaches the end of its life, it will be extracted from the building using power tools and sent to landfill. Unfortunately, the waste product cannot be recovered because it is contaminated with other materials such as the substrate and adhesive. Therefore, according to BRE PCR 3.2, 100% of the Altro Walls products will end up in landfill.		
C2 - Transport	A generic transport to site distance of 20 km has been selected as a reasonable average. End-users of the EPD can use this information to calculate a bespoke transport to site distance if required, i.e. divide the module A4 impacts by 20 and multiply them by a bespoke distance		
	Fuel type / Vehicle type	Litre of fuel type per distance or vehicle type	16-32 tonne lorry
	Distance:	km	20
C3 – Waste Processing	There are no pre-processing activities that the product undergoes before being sent to a landfill site.		
C4 – Disposal	According to Altro Ltd, 100% of the product is sent to the landfill at the end of life.		
	PVC Plastic waste to landfill	Kg	3.60
Module D	As 100% of the product is landfilled, there are no environmental benefits.		

Summary, comments and additional information

The bulk of the environmental impacts are attributed to the manufacturing of Altro Walls covered by information modules A1-A3 of EN15804:2012+A2:2019. Figure 1 below breaks down the GWP of Altro Walls into clear categories to understand the modules which cause the largest environmental impact. It's clear that the majority of the environmental impact stems from the product modules (A1 – A3). Stage A1 (raw material) accounts for nearly all emissions, with a minor contribution from A3 (manufacturing). Stage A2 (transport) shows the minimum value. The product is landfilled at the end-of-life stage, leading to GWP emissions in the C4 – Disposal stage. GWP-biogenic is balanced in A3 and A5 stages.

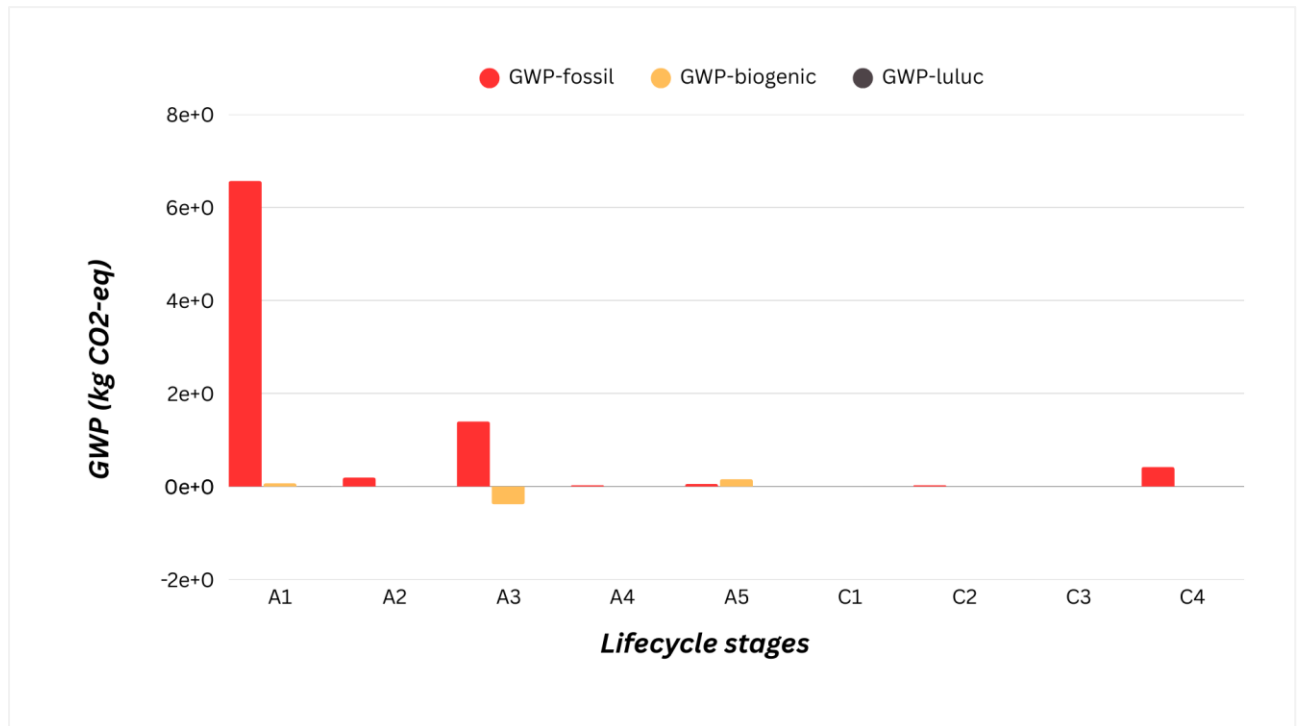


Figure 1



References

BSI. Sustainability of construction works – Environmental product declarations – Core rules for the product category of construction products. BS EN 15804:2012+A2:2019. London, BSI, 2019.

BSI. Environmental labels and declarations – Type III Environmental declarations – Principles and procedures. BS EN ISO 14025:2010 (exactly identical to ISO 14025:2006). London, BSI, 2010.

BSI. Environmental management – Life cycle assessment – Principles and framework. BS EN ISO 14040:2006. London, BSI, 2006.

BSI. Environmental management – Life cycle assessment – requirements and guidelines. BS EN ISO 14044:2006. London, BSI, 2006.

EN ISO 24346 - Resilient floor coverings — Determination of overall thickness.

DIN 53752 Testing of plastics; determination of the coefficient of linear thermal expansion.

DIN 53421 Testing of rigid cellular plastics; compression test.

ISO 527-1:2012 Plastics -- Determination of tensile properties -- Part 1: General principles.

ISO 179-1:2010 Plastics -- Determination of Charpy impact properties -- Part 1: Non-instrumented impact test.

ISO 178:2019 Plastics -- Determination of flexural properties.

ISO 868:2003 Plastics and ebonite -- Determination of indentation hardness by means of a durometer (Shore hardness).

ISO 306:2004 Plastics -- Thermoplastic materials -- Determination of Vicat softening temperature (VST).

ISO 75-2:2013 Plastics -- Determination of temperature of deflection under load -- Part 2: Plastics and ebonite.

ISO 62:2008 Plastics -- Determination of water absorption.

Plastics Europe. An analysis of European plastics production, demand and waste data. 2021. [Plastics - the Facts 2021 • Plastics Europe](#)

DIN 52 612 - Determination of thermal conductivity by means of the guarded hot plate apparatus

ISO 1183 - Plastics — Methods for determining the density of non-cellular plastics