

BRE Global EN 15804 Verified EPD Scheme Scheme Document SD207

BRE Global	SCHEME DOCUMENT	Doc No: SD 207
		Rev No: 2
Verification of EPD based on BRE Environmental Profiles 2013: Product Category Rules for Type III environmental product declaration of construction products to EN 15804:2012		Date: 25/2/2014
		Page: 2 of 6

1. Introduction

This verification scheme has been established to provide independent, third party verification of Environmental Product Declarations (EPD) for construction products compiled in accordance with the BRE Environmental Profiles 2013: Product Category Rules (PCR) for Type III environmental product declaration of construction products to EN 15804:2012.

This verification scheme has been designed to ensure that the EPD are in conformance with referenced Standards.

Following successful verification, the company and product details as well as the EPD will appear on BRE Global's GreenBookLive website (www.greenbooklive.com).

2. Scope

Construction products are assessed using the BRE Environmental Profiles 2013: Product Category Rules (PCR) for Type III environmental product declaration of construction products to EN 15804:2012. This PCR is used to generate an EPD for declared units (e.g. per mass, area, length, volume or item) and for functional units (e.g. area of building element).

This is not a product certification scheme; it is a scheme to certificate the process of generating a verified EPD.

This scheme provides verification and listing of EPD compiled in accordance with the BRE Environmental Profiles 2013 PCR.

The verification of an EPD is open to members of the verification scheme. To ensure the transparency of the verification procedure, a report will be generated that documents the verification process. This report will be available to any person upon request, whilst adhering to the obligations of rules for data confidentiality as set out in ISO 14025:2010 clause 8.3.

3. Scheme Membership

Scheme membership is open to construction product manufacturers and trade associations and interested stakeholders. Joining instructions and relevant membership information are available on BRE Global's GreenBookLive website (www.greenbooklive.com).

More information is available by contacting BRE Global on 01923 664100 or e-mailing enquiries@breglobal.co.uk.

4. Application for verification of an EPD

To apply for verification of an EPD, members of the scheme shall complete Application Form BF1324 and return it to BRE Global. On receipt, all applications are checked for eligibility and completeness. A quotation is prepared which includes the scope of verification and all of the fees for the review and reporting. For a list of fees, please see Fee Sheet FS068.

All proposals and contracts are subject to BRE Global's Standard Terms and Conditions as detailed in PN101. If the scheme member is content to continue the verification processes on receipt of the proposal, the declaration section with the verification fee should be returned to BRE Global to enable the process to continue.

5. The verification process

Application and quotation - As detailed above, the process starts with the completion of our application form followed by a quotation for the verification of an EPD. The quotation will give the full breakdown of costs, options and obligations under the Scheme. See fee sheet FS068 for details of all costs associated with the Scheme.

Verification data submitted by scheme member

A: LCA calculation rules and background report

We ask for the LCA background report containing the following data required for the verification process to be sent to us for a desk top evaluation.

- General information
- Goal and intended application
- Unit of assessment (functional / declared unit)
- Detailed product description (composition, technical specification) including process flow diagram
- Description of system boundaries (modules assessed)
- Criteria for exclusion of inputs and outputs
- Data selection and quality requirements
- Development of product level scenarios
- Data collection and calculation process
- Allocation procedure
- Mass balance and assignment of life cycle data to datasets of an LCA-software
- LCIA¹ results per modules or unit processes, e.g. structured according to life cycle stages.
- LCIA results per production plant/product if generic data is declared from several plants or for a range of similar products.

B: EPD requirements

The EPD template is made available to the scheme members through BRE Global's on-line tool, **EPD Hub**, on GreenBookLive website (www.greenbooklive.com). This should be completed and submitted to BRE Global for verification.

Review of verification Data

BRE Global will review the verification data submitted by the scheme member to confirm conformance with the *BRE Environmental Profiles 2013: Product Category Rules for Type III environmental product declaration of construction products to EN 15804:2012*.

Deliverables to the EPD owner

- Verified EPD
- Verification report
- Entry onto BRE Global's GreenBookLive website (www.greenbooklive.com)

Appendix 1 provides details of the verification process.

¹ Life Cycle Impact Assessment

6. Validity of the EPD

After verification an EPD is valid for 5 years from the date of issue, after which it shall be reviewed and verified. However, a change in the underlying data that is sufficient to generate a change of $\pm 10\%$ for any one of the declared parameters of the EPD shall be considered significant and in such an instance the EPD shall be recalculated and verified (BS EN 15804:2012, clause 9).

The manufacturer (or trade association) is the sole owner, and has liability and responsibility for an EPD and therefore shall ensure that BRE Global is notified when the EPD requires recalculation and verification. See EN 15804:2012, clause 5.5.

7. Maintenance

BRE Global will contact the EPD owner on an annual basis to request a signed declaration that no changes have occurred to the product or production process or request information on any factors that resulted in a $\pm 10\%$ change in any of the declared parameters. If any such changes have occurred, the EPD owner must submit a new EPD for verification.

8. Competence of Personnel

Personnel within BRE Global who have attained the minimum level of competence to perform verifications as required by ISO 14025:2010 Clause 8.2.2 will be appointed as verifiers.

9. Verification Mark

Once an EPD has been verified, the EPD provider can use the verification mark, as directed in the publication *PN242 - General Rules and Guidance for the Use of the BRE Global Certification Mark*

10. Complaints and Appeals

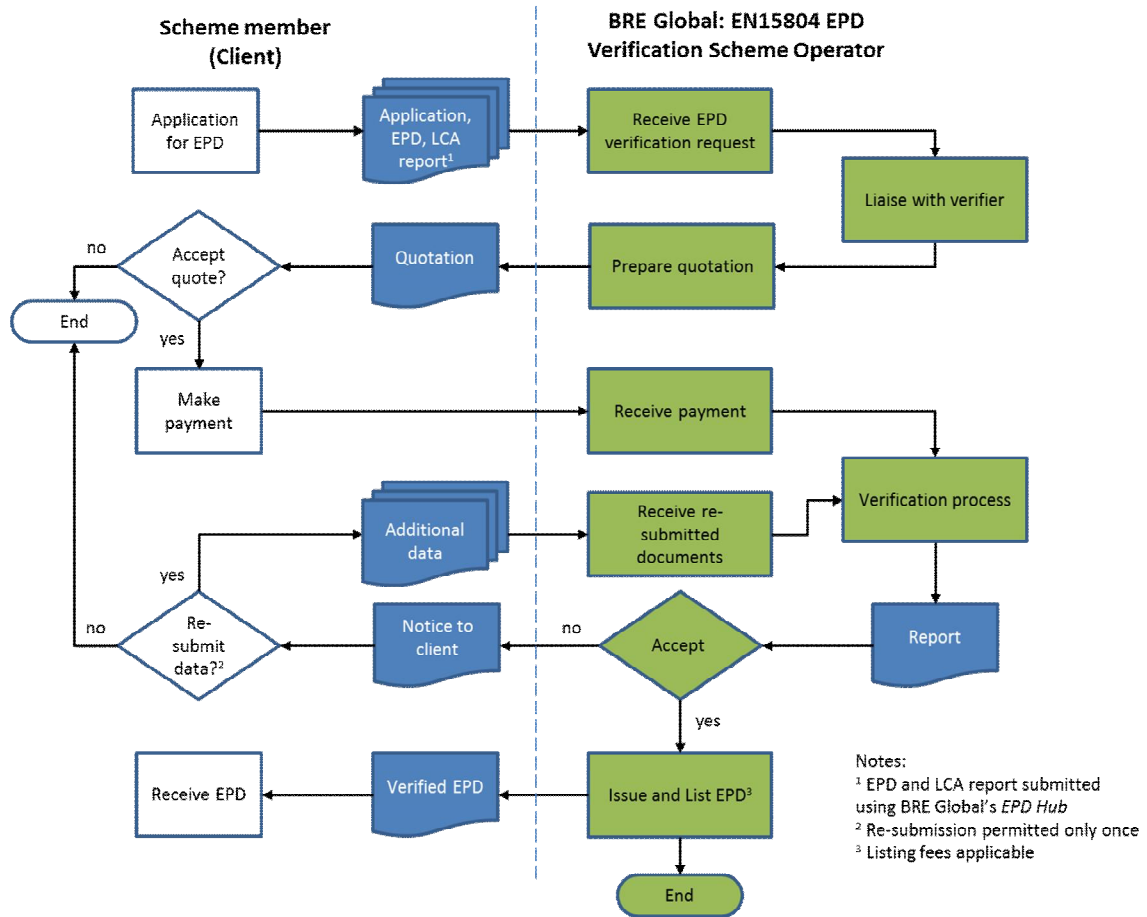
BRE Global operates procedures for complaints and appeals. Details of this procedure can be found in the document *PN100 – Complaints and Appeals Procedure*.

11. Other supporting documents

In addition to this scheme document and the documents noted in sections 8. and 9. the scheme operates through a number of other BRE Global documents, these are:

- a. *PN 101 - BRE Global Terms and Conditions – Listing and Certification*
- b. *PN 159 - Change in Ownership*
- c. *PN 514 - PCR for Construction Products EPD (to EN 15804:2012), and*
- d. *LP765 - General Programme Instructions*

Appendix 1 – The Verification Process



BRE Group

Bucknalls Lane,
Watford,
WD25 9XX

T +44 (0)1923 664000
E enquiries@bre.co.uk
W www.bre.co.uk

BRE Trust

The BRE Trust uses profits made by BRE Group to fund new research and education programmes, that will help it meet its goal of 'building a better world together'.

The BRE Trust is a registered charity in
England & Wales: No. 1092193, and Scotland: No. SC039320.